



Our work in the Pacific Islands and Papua New Guinea

MARCH 2025



THE WORLD BANK
IBRD • IDA | WORLD BANK GROUP
East Asia & Pacific

How World Bank-supported projects are helping governments and people in the Pacific*

Agriculture & Food



In Papua New Guinea, the Productive Partnerships in Agriculture Project has increased the income and yields of close to 70,000 cocoa and coffee-growing farmers including 24,000 women across the country's 12 provinces. This support is now expanding to include coconut, spices and small livestock through the PNG Agriculture Commercialization and Diversification Project which focuses on training farmers to commercialize their produce and connect with prospective buyers.

Additionally, the project supports upgrading local infrastructure, including feeder roads and wharves, to facilitate trade and provides family training in gender-sensitive empowerment and financial literacy to farmer households.

Digital Development



Through the *Pacific Regional Connectivity Program*, the Pacific is being connected to faster, cheaper and more reliable internet. Fiber-optic cables have been, or will soon be, connected in the Federated States of Micronesia, Fiji, Kiribati, Palau, Samoa, Tonga and Tuvalu.

In Tonga, this work has increased broadband access from 2% of the population in 2010 to 64% in 2021 and reduced the cost of broadband by 97%.

Our support has helped deliver a massive transformation in Samoa, supported a new domestic cable system in Fiji, and is helping Pacific countries establish digital government services, and strengthen regulations for the digital economy.

Banking and Access to International Finance



The World Bank, in partnership with the Pacific Islands Forum Secretariat, Australia and New Zealand is helping seven Pacific Island Countries address the decline in Correspondent Banking Relationships. This critical work safeguards financial access, economic stability, and regional connectivity, ensuring continued financial access while securing long-term financial connectivity.

Education



We are helping Pacific countries to pilot improvements in secondary school, with the aim of lifting education outcomes and reducing dropout rates.

From upgraded classrooms to improved lesson plans, the *Tonga Safe & Resilient Schools Project* is providing access to safer schools, better learning tools, and stronger futures for more than 8,000 Tongan students.

Energy



In Solomon Islands, new connections to solar power, together with the *Tina River Hydropower Project* – now under construction – have connected 2,400 families to electricity, while delivering new community infrastructure and supporting microenterprises in urban and rural areas.

In Tuvalu, which has been heavily reliant on diesel for electricity, the *Tuvalu Energy Development Sector Project* is helping to drive the country's switch to renewable energy.

In Papua New Guinea, the *National Energy Access Transformation Project*, will improve the lives of over 400,000 people by bringing electricity to rural households; expanding renewable energy generation; supporting the modernization of the country's electricity infrastructure; this will benefit households, businesses, and communities across the country.

Resources



The *Pacific Islands Regional Oceanscape Program* is helping Pacific countries coordinate sustainable management of tuna fisheries to ensure the benefits are maximized for each country's future growth and development. The program also helps countries to sustainably manage their coastal fisheries and critical habitats, and is active in the Federated States of Micronesia, Kiribati, Marshall Islands, Solomon Islands, Tonga and Tuvalu, in addition to supporting the region-wide Forum Fisheries Agency.

Governance



We are supporting governments across the Pacific to strengthen the management of public finances to ensure the long-term health of government budgets and delivery of public services.

This includes important debt and financial management reforms in Federated States of Micronesia, Marshall Islands, Solomon Islands and Tonga.

Similar support has also led to the establishment of a new Independent Commission Against Corruption in Solomon Islands and expansion of Marine Protected Areas in Fiji.

Health



In PNG, we have helped authorities address the spread of multi-drug resistant tuberculosis, and working to strengthen health services at community level clinics. TB Treatment success in Port Moresby has now grown from 54% in 2017 to 90% in 2023.

In Marshall Islands, the *Multisectoral Early Childhood Development Project* is investing in maternal and child health, as well as early childhood stimulation and preschool services, with a focus on the first 1,000 days of life. Through this project, social assistance payments support more than 1,200 families to help their children reach their full potential.

In Samoa, we are supporting improved access to health care in rural areas, particularly focusing on addressing non-communicable diseases.

Jobs & Social Protection



Nearly 20,000 young Solomon Islanders have undertaken more than one million days of work and training through the *Rapid Employment Project* and its successor, the *Community Access and Urban Services Enhancement Project II* building vital community infrastructure like footpaths, stairs and public washrooms.

Jobs & Social Protection continued

In PNG, thousands of young people in Port Moresby and Lae are taking part in the *Urban Youth Employment Project* – providing employment opportunities and life skills training.

In addition, the *Enhancing Labor Mobility Project* supports workers and their households to benefit from overseas employment opportunities, with a specific focus on women and disadvantaged groups.

In Fiji, approximately four thousand Fijians – mostly women – living in rural communities have benefited from cash-for-works opportunities supporting environmental restoration work through the *Jobs for Nature Project*.

Faced with high secondary school dropout rates, the *Skills and Employment for Tongans Project* has supported the Tongan government to implement a cash transfer program to assist households in keeping their children in secondary school.

The World Bank is helping countries develop social protection systems that help the region's most vulnerable people deal with crises and shocks, find work, invest in their children's education and health, and protect the aging.

Data, Analysis and Statistics



The lack of quality data for – and in – Pacific Island countries remains a critical roadblock to the region's understanding of poverty, welfare and social development.

Through analytical reports the World Bank is helping Pacific governments and partners make more informed policy decisions. These include *Public Expenditure Reviews*, *Country Economic Memorandums*, *Poverty Assessments* and the *Pacific and Papua New Guinea Economic Updates* that provide the region with the latest economic projections and analysis.

Data, Analysis and Statistics continued

Through the *Pacific Observatory*, we are helping Pacific countries modernize data collection, including through phone surveys, satellite imagery, and other data sources to support evidence-based policymaking.

Climate Resilience and Disaster Response



Pacific Island countries are at the front line of climate change and disasters. The *Pacific Atoll Countries Country Climate and Development Report* (CCDR) aims to integrate climate and development goals, focusing on the unique challenges faced by Pacific Atoll nations due to climate change. The consultations the CCDR team conduct across the region are crucial for gathering local insights, knowledge, and ensuring that the report addresses the specific needs and priorities of Pacific communities.

In December 2024 the World Bank responded to Vanuatu's devastating 7.3m earthquake within days, providing US\$12m in emergency grant assistance and followed that in January with US\$30m in grants for recovery and to strengthen disaster response in the future.

World Bank support also helped Tonga recover from 2022's volcanic eruption and tsunami, with similar support to Vanuatu following dual cyclones in 2023, with immediate cash support to support each country's response. We also helped upgrade and reconstruct infrastructure in both countries, including hundreds of classrooms, bathroom facilities, new Emergency Operation Centres, and better multi-hazard early warning systems.

The *Pacific Resilience Program* is helping Marshall Islands, Samoa, Tonga, and Vanuatu to build early warning systems, strengthen disaster policies and community resilience, and support for a regional disaster insurance scheme to ensure quick access to finance after a disaster.

Transport



The *Pacific Climate Resilient Transport Program* is making roads, ports, bridges and other transport infrastructure more resilient to the impacts of climate change and disasters.

Collectively, 45% of the population across Federated States of Micronesia, Kiribati, Samoa, Tonga, Tuvalu and Vanuatu are expected to benefit from greater access to transport services as a result of these works.

In PNG, more than 236 kilometres of critical roads links have been restored through the Road Maintenance and Rehabilitation Project, with more than 50 bridges also rehabilitated across the country. An estimated 1.3 million people (roughly 27% of PNG's population) have benefitted from our support.

The *Pacific Aviation Investment Program* has delivered major reconstruction works to airports and runways in Kiribati, Samoa, Solomon Islands, Tonga, Tuvalu and Vanuatu; helping to make air travel safer and more efficient across the Pacific.

Tourism



On Fiji's second-largest island of Vanua Levu, we are supporting resilient, sustainable tourism development, including destination development, improved connectivity, and essential services to drive community-based tourism and private sector development. The project will benefit 60,000 Fijians and create 30 new locally-managed marine areas.

Water & Sanitation



In PNG, our support is connecting four key rural towns across PNG to clean, reliable water supply services for tens of thousands of people across the country.

In Kiribati, the *South Tarawa Water Supply Project* is providing people on Kiribati's most populated island with better access to a safe, reliable and climate-resilient water supply.



OUR MISSION

Our mission is to end extreme poverty and boost shared prosperity on a livable planet. This is threatened by multiple, intertwined crises. Time is of the essence.

We are writing a new playbook to drive impactful development that is:

- Inclusive of everyone, including women and young people.
- Resilient to shocks, including against climate and biodiversity crises, pandemics and fragility.
- Sustainable, through growth and job creation, human development, fiscal and debt management, food security and access to clean air, water, and affordable energy.

The Pacific Islands and Papua New Guinea

Pacific Island countries have substantial natural resources and extraordinary linguistic and cultural diversity. However, Pacific countries are physically remote, have small populations spread across many islands, and are some of the world's most vulnerable countries to the impacts of climate change and natural disasters.

As the region recovers from the economic contraction of the pandemic, many Pacific countries remain extremely vulnerable to climate, health and economic shocks that are driving supply chain shortages and inflation impacts.

Our impact across the Pacific

The World Bank is supporting Pacific countries to overcome these challenges, informed by the Pacific Islands Forum's 2050 Strategy for the Blue Pacific Continent. The World Bank is currently supporting 90 active projects across the Pacific Islands and Papua New Guinea, totaling US\$3.21 billion in commitments. Our support has rapidly increased over the past decade, with a 50% increase in staff across the Pacific region, and a seven-fold increase in World Bank-supported projects since 2014.

This work has been driven by significant increases in support through both the International Development Association (IDA) and the International Bank for Reconstruction & Development (IBRD).

The World Bank's work in the Pacific is also supported by the Australian and New Zealand governments, through the PNG and the Pacific Islands Umbrella Facility (PPIUF).

The World Bank Group

INTERNATIONAL BANK FOR RECONSTRUCTION & DEVELOPMENT (IBRD)

Lends to governments of middle-income & creditworthy low-income countries.

INTERNATIONAL DEVELOPMENT ASSOCIATION (IDA)

Provides interest-free loans & grants to governments of the poorest countries.

INTERNATIONAL FINANCE CORPORATION (IFC)

Focused on the private sector in emerging markets, IFC uses its capital, expertise, and influence to create markets and opportunities in developing countries.

THE MULTILATERAL INVESTMENT GUARANTEE AGENCY (MIGA)

MIGA offers political risk insurance (guarantees) to investors and lenders to promote foreign direct investment into developing countries.

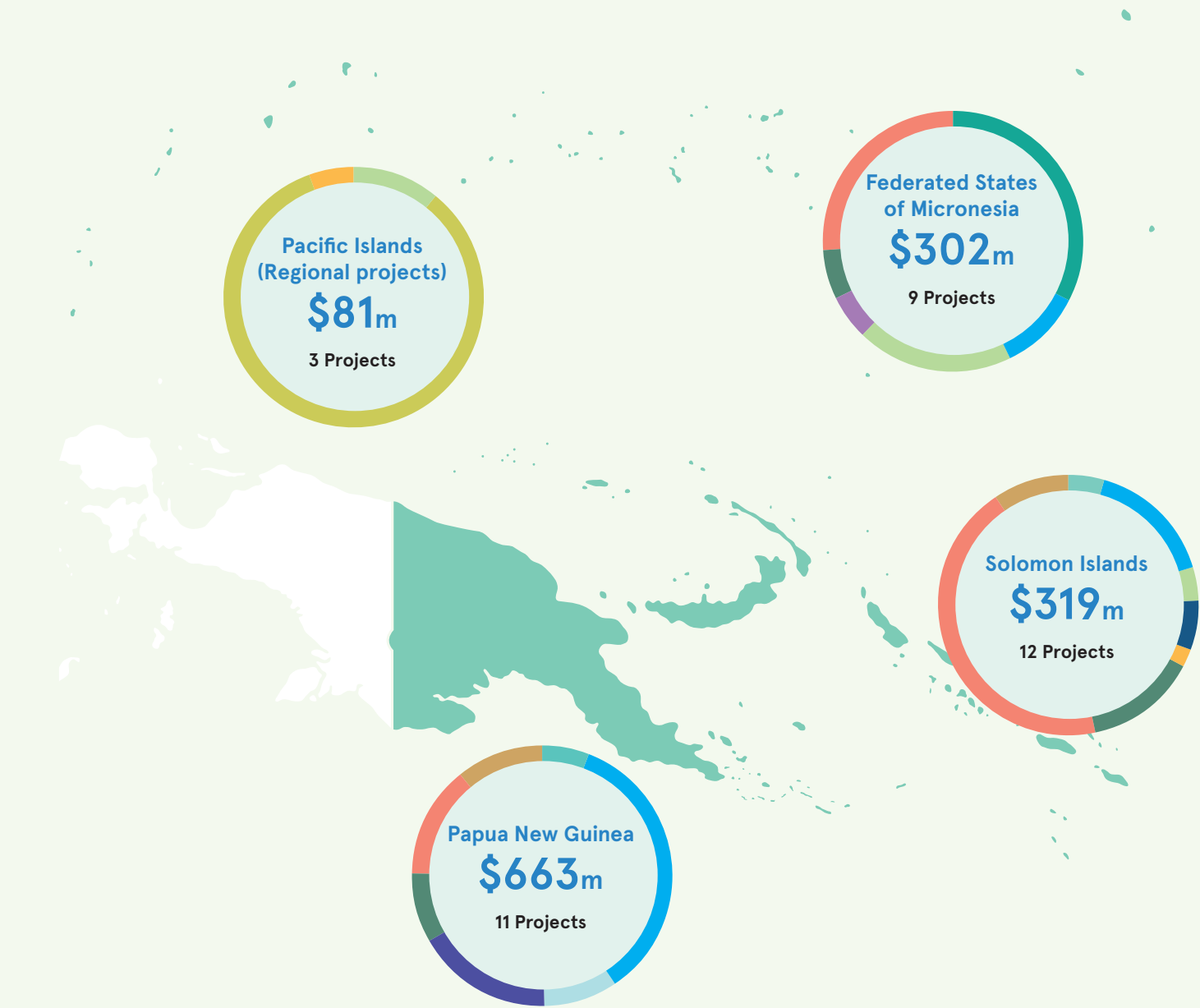
THE INTERNATIONAL CENTRE FOR SETTLEMENT OF INVESTMENT DISPUTES

Provides international facilities for conciliation & arbitration of investment disputes.

WHERE WE WORK

Working in partnership with 11 countries across the region, the World Bank is currently supporting 90 active projects across the Pacific Islands and Papua New Guinea, totaling US\$3.22 billion in commitments.

* based on March 2025 data.



Agriculture & Food		Finance & Innovation		Jobs	
Digital Development		Governance		Social Sustainability & Inclusion	
Education		Health		Economic Resilience	
Energy		Poverty & Equity		Transport	
Environment & Natural Resources		Resilience		Water & Sanitation	

\$3.22

Billion

91

Projects

11

Countries

